

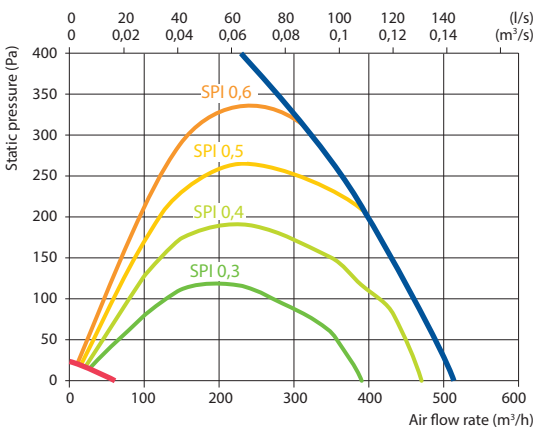
# Domekt R 400 H C6M

Maximal air flow, m <sup>3</sup> /h	446
Maximal air flow, l/s	124
Reference flow rate, m <sup>3</sup> /s	0,087
Reference pressure difference, Pa	50
SPI, W/(m <sup>3</sup> /h)	0,27
Thermal efficiency of heat recovery, %	84
Electric air heater capacity, kW / Δt, °C	1/9,4
Supply voltage, V	1~230
Maximal operating current HE, A	7,3
Power supply cable, mm <sup>2</sup>	3×1,5
Electric power input of the fan drive at maximum flow rate, W	112
Electric power input of the fan drive at reference flow rate, W	45
Noise power level, L <sub>WA</sub> , dB(A)	45
Noise pressure level, L <sub>PA</sub> , dB(A), (3 m)	34
Filters dimensions B×H×L, mm	417×210×46
Unit dimensions B×H×L, mm	515×567×660
Maintenance space, mm	650
Unit weight, kg	49



## Performance

Unit with standard equipment

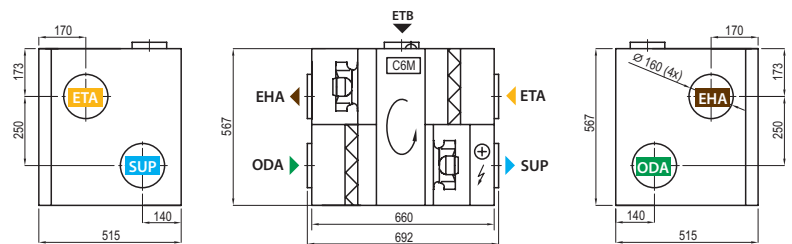


## Temperature efficiency

	Winter					Summer		
Outdoor temperature, °C	-23	-15	-10	-5	0	25	30	35
After heat exchanger, °C	14,8	16,1	16,9	17,7	18,5	22,5	23,3	24,1

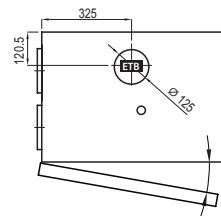
indoor +22 °C, 20 % RH

Shown as right (R1)

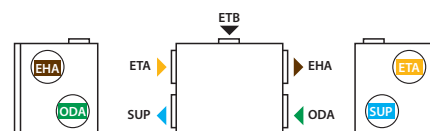


## Accessories

Closing damper	AGUJ-M-160+LF230/CM230	
Silencer	ODA/EHA	AGS-160-50-600-M
	SUP/ETA	AGS-160-50-900-M
Water heater	DH-160	
PPU	PPU-HW-3R-15-0,4-W2	
2-way valve (heater)	VVP47.10-0,4+SSF161.05HF	
Water cooler	DCW-0,4-3	
2-way valve (cooler)	VVP47.10-1,6+SSF161.05HF	
Outdoor grill	LD-160	
Water heater-cooler	DHCW-160	
DX cooler	DCF-0,4-3	
Cooling unit	MOU-12HFN8a+KA8140	



Shown as left (L1)



- ▶ ODA – outdoor intake
- ▶ SUP – supply air
- ▶ ETA – extract indoor
- ▶ EHA – exhaust air
- ▶ ETB – additional extraction connection (by-pass – extraction without heat recovery)